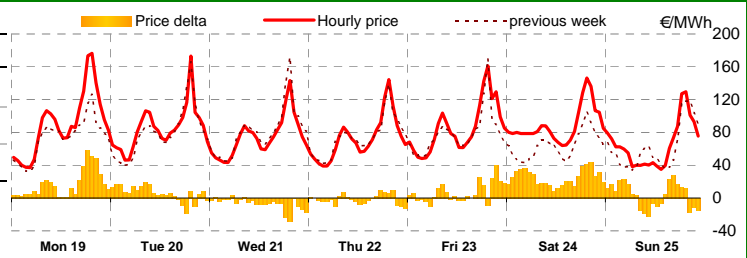


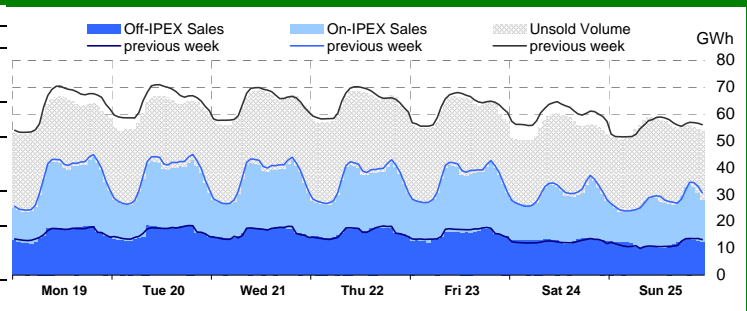
Purchasing Price

	Average	Change	
	€/MWh	%	Absolute
Baseload	80.15	+9.5%	+6.93
Peak	93.23	+4.4%	+3.92
Off -Peak	72.82	+13.3%	+8.54
Hourly minimum	34.94		
Hourly maximum	176.37		



Offered, Sold and Purchased Volumes

		Total	Average	Change
		MWh	MWh	%
Offers	National	8,907,248	53,337	-2.0%
	Foreignn	1,099,407	6,583	-14.6%
	Total	10,006,655	59,920	-3.6%
Solds	National	4,598,820	27,538	+0.5%
	Foreignn	1,057,241	6,331	-10.1%
	Total	5,656,060	33,869	-1.7%
Purchases	National	5,594,910	33,502	-1.0%
	Foreignn	61,150	366	-39.0%
	Total	5,656,060	33,869	-1.7%



Electricity Supply

	MWh	Change	Structure
IPEX	3,159,100	-3.9%	55.9%
Market Participants	1,379,520	-3.5%	24.4%
GSE	974,952	-1.7%	17.2%
Foreign zones	804,628	-7.1%	14.2%
Balance of PCE schedules	-	-	-
PCE (included MTE)	2,496,960	+1.2%	44.1%
Foreign zones	252,613	-18.5%	4.5%
National zones	2,244,348	+4.0%	39.7%
Balance of PCE schedules	-	-	-
SOLD VOLUMES	5,656,060	-1.7%	100.0%
UNSOLD VOLUMES	4,350,594	-6.0%	
TOTAL SUPPLY	10,006,655	-3.6%	

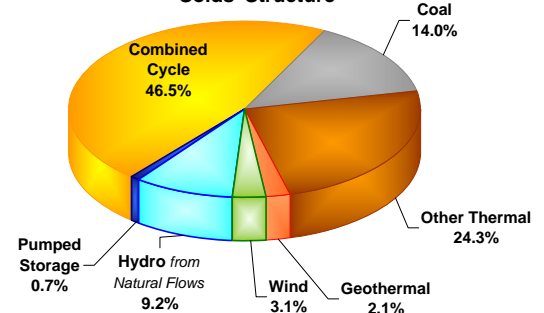
Electricity demand

	MWh	Change	Structure
IPEX	3,159,100	-3.9%	55.9%
Acquirente Unico	838,298	-0.5%	14.8%
Other market participants	1,921,923	+3.9%	34.0%
Pumping	10,098	-37.5%	0.2%
Foreign zones	52,800	-42.6%	0.9%
Balance of PCE schedules	335,981	-31.0%	5.5%
PCE (included MTE)	2,496,960	+1.2%	44.1%
Foreign zones	8,350	+0.0%	0.1%
Acquirente Unico - National zones	664,656	-4.5%	11.8%
Other operator - National zones	2,159,935	-4.0%	38.2%
Balance of PCE schedules	-335,981		
PURCHASED VOLUMES	5,656,060	-1.7%	100.0%
UNPURCHASED VOLUMES	454,712	-19.7%	
TOTAL DEMAND	6,110,772	-3.3%	

Volumes by type of power plant

Power plant	Total	Average	Change	
	MWh	MWh	MWh	%
Thermal	3,998,915	23,946	+344	+1.5%
Combined Cycle	2,138,145	12,803	+286	+2.3%
Coal	645,230	3,864	+54	+1.4%
Geothermal	97,323	583	+2	+0.3%
Other Thermal	1,118,217	6,696	+2	+0.0%
Hydro	456,886	2,736	+105	+4.0%
from Natural Flows	423,405	2,535	+62	+2.5%
Pumped Storage	33,481	200	+42	+26.8%
Wind	143,019	856	-321	-27.2%
Total power plant	4,598,820	27,538	+128	+0.5%

Solds' Structure



Electricity Account Registration Platform (PCE)

Recorded transactions and Schedules in week no. 12

Recorded transactions	Recorded transactions			Schedules	Injection		Withdrawals	
	MWh	Change	Structure		MWh	Structure	MWh	Structure
Baseload	1,962,410	+0.3%	30.9%	Requested	2,663,032	100.0%	2,832,941	100.0%
Off Peak	181,147	+20.6%	2.9%	of which with specified price	986,532	37.0%	-	-
Peak	220,172	+14.8%	3.5%	Recorded	2,496,960	93.8%	2,832,941	100.0%
Week-end	1,175	-	0.0%	of which with specified price	822,841	30.9%	-	-
Total Standard	2,364,904	+2.9%	37.2%	Rejected	166,072	6.2%	-	0.0%
Total Non-standard	3,379,267	-3.3%	53.2%	of which with specified price	163,691	6.1%	-	-
Bilaterals	5,744,171	-0.8%	90.5%	Balance of schedules	-		335,981	
MTE	605,090	+0.1%	9.5%					
PCE Total	6,349,261	-0.7%	100.0%					
Net position	3,806,992	-2.3%	60.0%					

Zonal Selling Prices

	North		Central North		Central South		South		Sicilia		Sardegna	
	€/MWh	Var	€/MWh	Var	€/MWh	Var	€/MWh	Var	€/MWh	Var	€/MWh	Var
Baseload	77.07	+8.7%	77.07	+8.7%	77.07	+8.7%	76.95	+9.2%	95.58	+9.0%	112.37	+22.8%
Peak	90.47	+2.6%	90.47	+2.6%	90.47	+2.6%	90.14	+3.7%	109.58	+4.5%	124.67	+36.6%
Off-peak	69.56	+13.5%	69.56	+13.5%	69.56	+13.5%	69.56	+13.5%	87.73	+12.3%	105.47	+15.1%
Hourly minimum	31.00		31.00		31.00		31.00		37.00		31.00	
Hourly maximum	170.00		170.00		170.00		170.00		188.27		300.00	

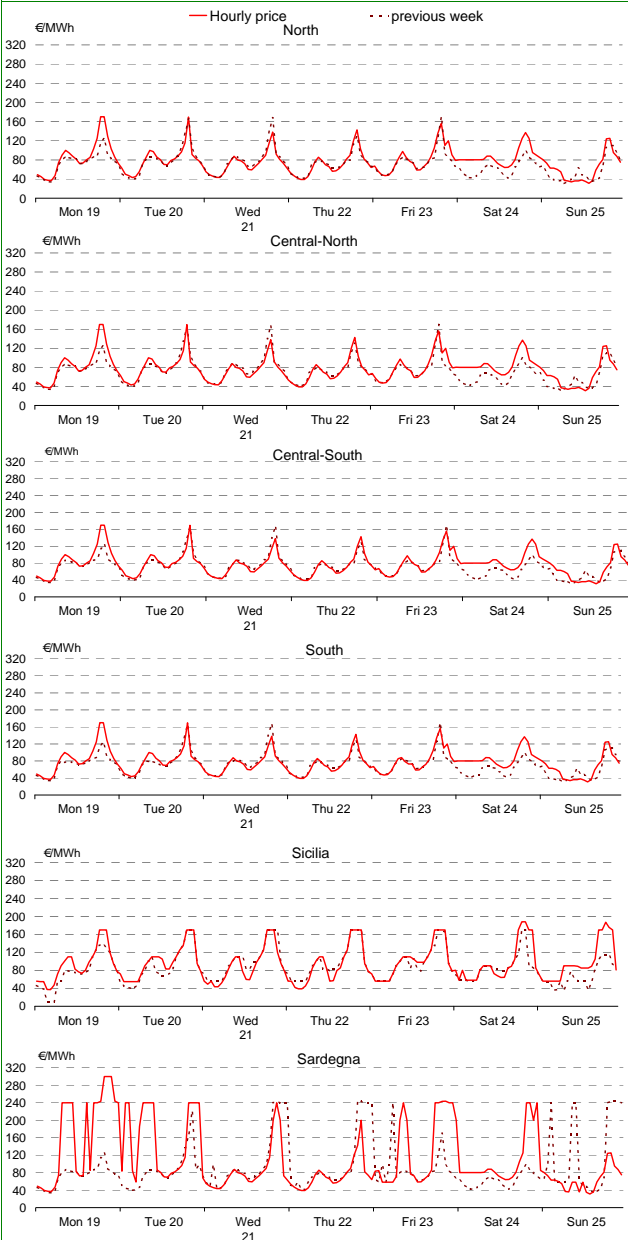
Zonal Volumes

		North		Central North		Central South		South		Sicilia		Sardegna	
		MWh	Var	MWh	Var	MWh	Var	MWh	Var	MWh	Var	MWh	Var
Offers	Total	4,252,239	-0.6%	775,792	-1.1%	1,433,196	-1.0%	1,556,982	-6.8%	568,603	-4.3%	320,436	+0.3%
	Average	25,463	-153	4,645	-51	8,582	-86	9,323	-677	3,405	-153	1,919	+6
Solds	Total	2,167,819	+2.7%	415,083	+8.6%	579,813	-3.3%	864,814	-4.7%	345,972	-2.9%	225,318	+1.9%
	Average	12,981	+340	2,486	+198	3,472	-118	5,179	-255	2,072	-61	1,349	+25
Purchases	Total	2,995,178	+0.0%	612,984	-1.5%	899,167	-1.9%	434,188	-2.1%	364,474	-3.2%	288,919	-3.7%
	Average	17,935	+8	3,671	-56	5,384	-106	2,600	-55	2,182	-72	1,730	-66

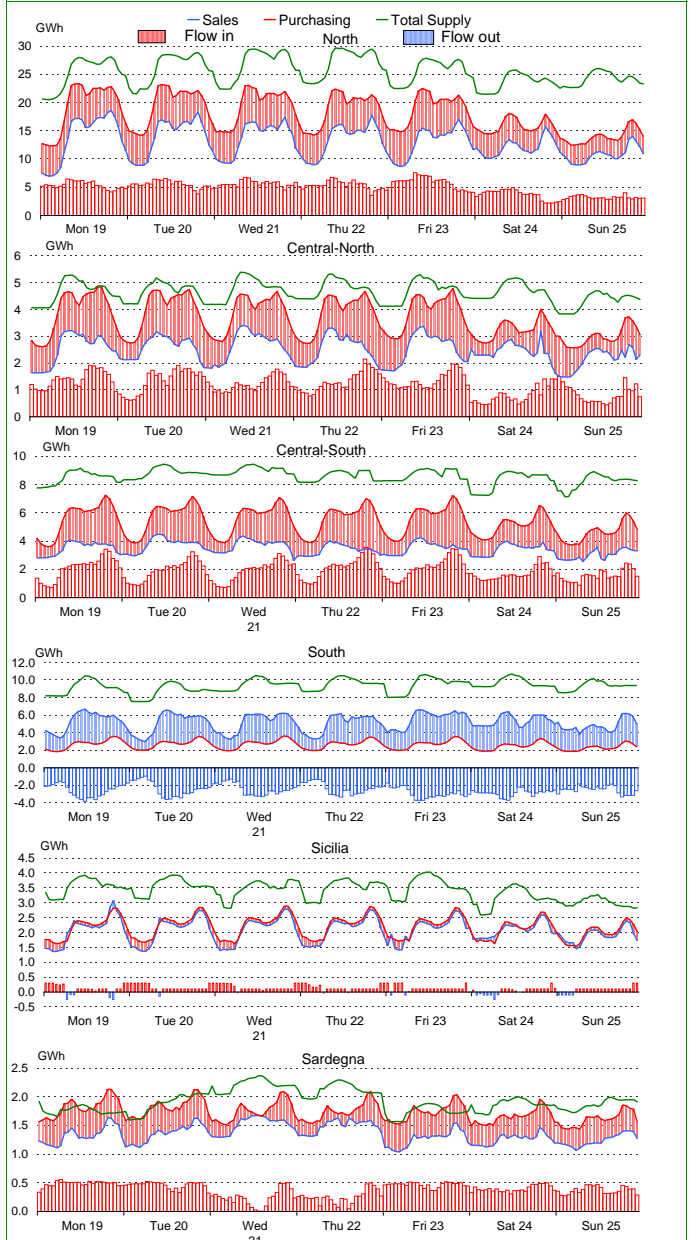
Volumes by type of power plant. Hourly average

Power plant	North		Central North		Central South		South		Sicilia		Sardegna	
	MWh	Var	MWh	Var	MWh	Var	MWh	Var	MWh	Var	MWh	Var
Thermal	11,113	+2.6%	2,296	+9.4%	3,031	-0.2%	4,603	-0.8%	1,747	-4.9%	1,156	-0.0%
Combined Cycle	7,010	+2.2%	1,395	+17.4%	658	+9.6%	1,845	-5.9%	1,341	-1.1%	556	+0.3%
Coal	1,616	+5.8%	0	-	1,755	-1.0%	0	-	-	-	492	-3.0%
Geothermal	-	-	581	+0.3%	-	-	2	+0.0%	-	-	-	-
Other Thermal	2,487	+1.8%	320	-3.0%	619	-7.0%	2,756	+2.9%	406	-15.6%	108	+14.0%
Hydro	1,852	+3.3%	184	-1.2%	304	-3.2%	262	+19.3%	74	+34.5%	60	-6.0%
from Natural Flows	1,750	+2.3%	159	-6.2%	304	-0.5%	262	+19.3%	37	+1.5%	23	-24.2%
Pumped Storage	102	+25.2%	25.27	+49.9%	0	-100.0%	-	-	37	+100.9%	36	+11.0%
Wind	16	-8.3%	6	+52.7%	137	-42.4%	313	-45.3%	251	+4.2%	133	+27.8%
Total power plant	12,981	+2.7%	2,486	+8.6%	3,472	-3.3%	5,179	-4.7%	2,072	-2.9%	1,349	+1.9%

Zonal Selling Prices

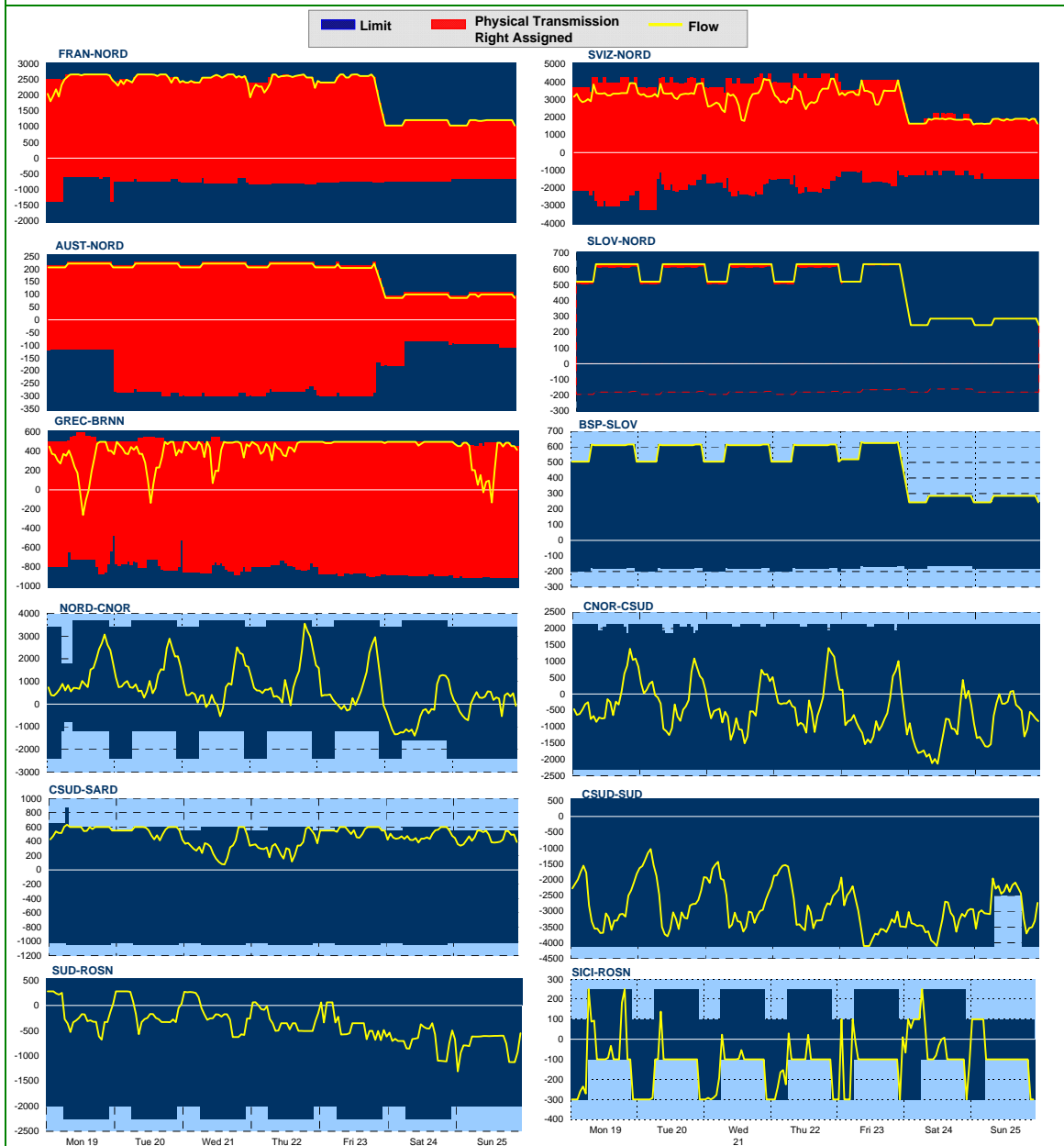


Zonal Volumes

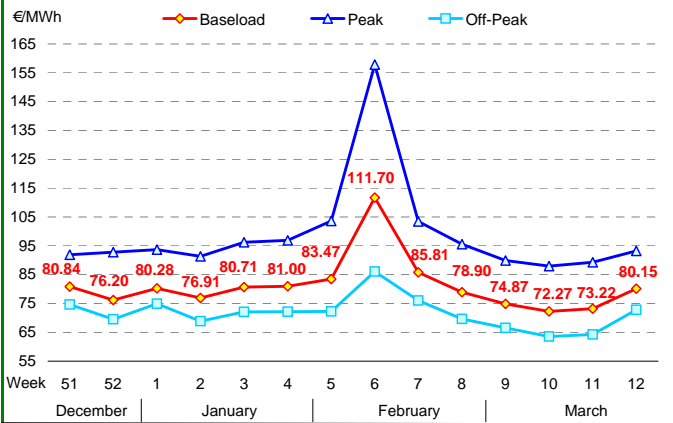


		Rent		Direction frequency		Average Physical Transmission Rights Assigned		Average flow		Average use of Physical Transmission Rights Assigned	
		Thousands of €		% of hours		MWh		MWh		%	
		Week no. 12	Week no. 11	Week no. 12	Week no. 11	Week no. 12	Week no. 11	Week no. 12	Week no. 11	Week no. 12	Week no. 11
Foreign Transmissions											
France - Northern Italy	FRAN-NORD NORD-FRAN	-	-	100.0%	100.0%	2,152	2,568	2,117	2,477	98.4%	96.5%
Switzerland - Northern Italy	SVIZ-NORD NORD-SVIZ	-	-	100.0%	100.0%	750	1,340	2,848	3,193	84.5%	78.6%
Austria - Northern Italy	AUST-NORD NORD-AUST	-	-	100.0%	92.9%	3,372	4,060	180	214	95.2%	96.5%
Slovenia - Northern Italy	SLOV-NORD NORD-SLOV	-	-	100.0%	100.0%	1,795	2,650	500	581	100.0%	99.4%
Greece - Brindisi	GREC-BRNN BRNN-GREC	-	-	95.8%	64.9%	211	226	427	281	81.3%	36.4%
				4.2%	35.1%	503	501	100	247	0.5%	12.0%
						829	723				
National Transmissions											
Northern Italy - Central-Northern Italy	NORD-CNOR CNOR-NORD	-	-	77.8%	93.5%	3,529	3,364	1,040	1,250	-	-
Central-Northern Italy - Central-Southern Italy	CNOR-CSUD CSUD-CNOR	-	-	24.0%	35.1%	1,734	1,612	539	87	-	-
Central-Northern Italy - Corsica	CNOR-CORS CORS-CNOR	-	-	-	-	-	-	-	-	-	-
Corsica - Sardegna	SARD-CORS CORS-SARD	-	-	100.0%	100.0%	50	50	50	50	100.0%	100.0%
Sardegna - Corsica AC	SARD-COAC COAC-SARD	-	-	100.0%	100.0%	100	100	35	54	-	-
Central-Southern Italy - Sardegna	CSUD-SARD SARD-CSUD	3,455	2,452	100.0%	100.0%	584	776	466	576	32.9%	20.8%
Central-Southern Italy - Southern Italy	CSUD-SUD SUD-CSUD	83	312	100.0%	100.0%	1,037	1,037	10,000	10,000	-	-
Foggia - Southern Italy	SUD-FOGN FOGN-SUD	164	222	-	-	10,000	10,000	-	-	-	-
Southern Italy - Rossano	SUD-ROSN ROSN-SUD	-	-	81.4%	91.7%	4,004	3,912	2,873	2,753	2.4%	8.9%
Sicilia - Rossano	SICI-ROSN ROSN-SICI	429	409	16.8%	31.0%	1,904	1,886	510	764	6.0%	7.1%
Priolo - Sicilia	SICI-PRGP PRGP-SICI	-	-	83.2%	69.0%	10,000	10,000	186	135	-	-
Southern Italy - Brindisi	SUD-BRNN BRNN-SUD	-	9	15.6%	13.1%	2,144	2,143	484	464	-	-
				84.4%	86.9%	186	186	99	98	8.4%	3.0%
				100.0%	100.0%	166	167	150	155	71.9%	78.6%
				-	-	10,000	10,000	-	-	-	-
				100.0%	100.0%	794	713	235	190	-	-
				-	-	10,000	10,000	-	-	-	-
				100.0%	100.0%	5,044	5,076	3,294	2,820	0.6%	0.6%
Market Coupling											
BSP - Slovenia	SLOV-BSP BSP-SLOV	2,717	1,778	100.0%	100.0%	179	184	490	564	100.0%	92.3%

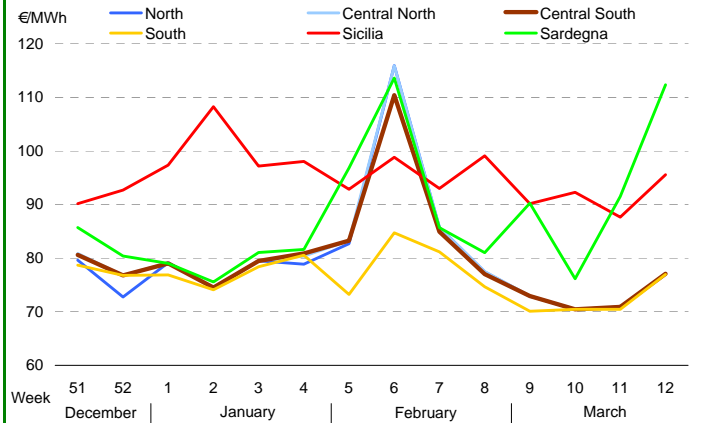
Trasmissions. MWh



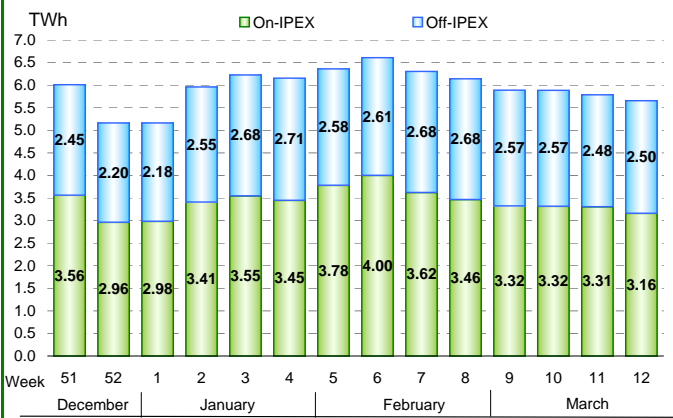
MGP - Purchasing Price



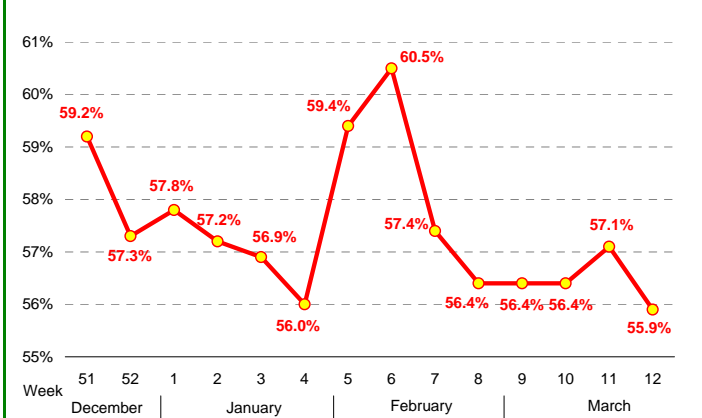
MGP - Selling price



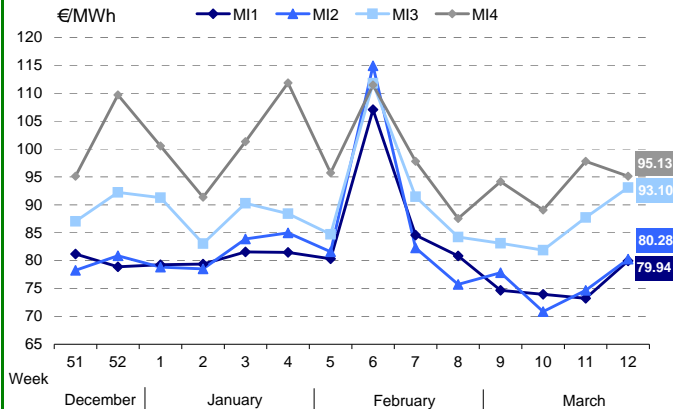
MGP - Volumes



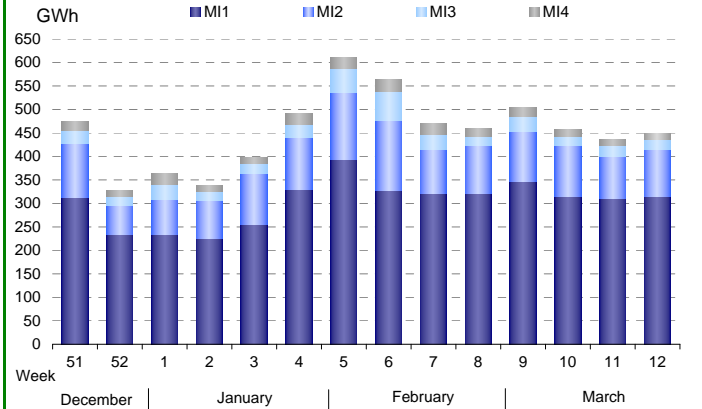
MGP - Liquidity



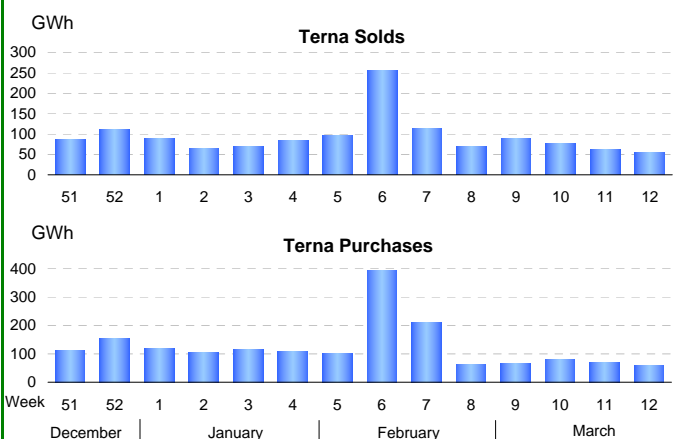
Intra-day Market (MI) - Prices



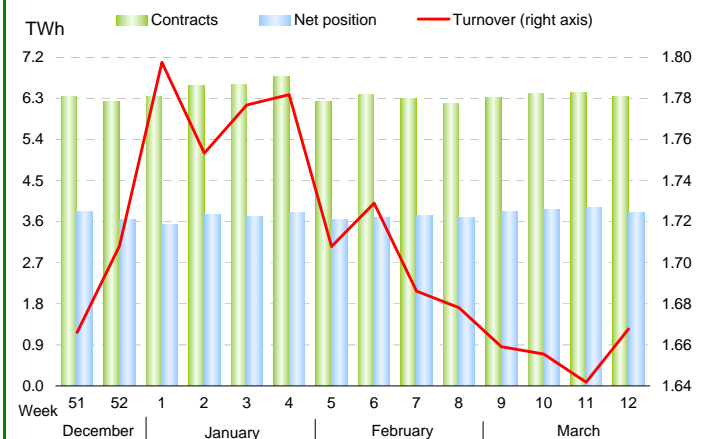
MI - Volumes



Ancillary Services Market (MSD)



Forward Electricity Account Trading Platform (PCE)

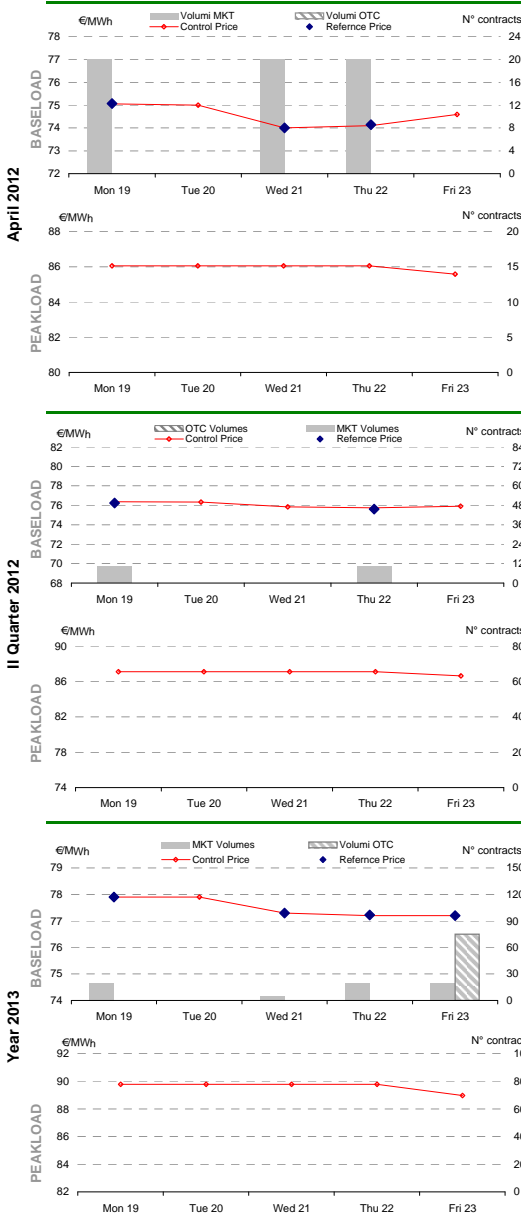


Prices and Volumes

	Minimum Price	Maximum Price	Control Price*		Contracts	Market Volumes	OTC Volumes	TOTAL Volumes		Open Interest	
	€/MWh	€/MWh	€/MWh	variation %	N.	MW	MW	MW	variation %	MW	MWh
Baseload Products											
April 2012	74.00	75.10	74.60	-0.5%	6	60	-	60	200.0%	2,685	1,933,200
May 2012	76.50	76.50	76.50	-0.6%	1	20	-	20	-	2,615	1,945,560
June 2012	76.60	76.60	76.60	-0.5%	1	20	-	20	-60.0%	2,665	1,918,800
II Quarter 2012	75.60	76.25	75.91	-0.6%	2	20	-	20	-55.6%	3,145	6,868,680
III Quarter 2012	79.95	81.50	80.00	-0.8%	6	50	-	50	-41.2%	2,945	6,502,560
IV Quarter 2012	82.10	83.00	82.40	-0.7%	3	45	-	45	800.0%	2,700	5,964,300
I Quarter 2013	-	-	80.50	0.0%	-	-	-	-	-	-	-
Year 2013	77.20	77.90	77.20	-0.9%	11	65	75	140	27.3%	755	6,613,800
Total					30	280	75	355			31,746,900
Peakload Products											
April 2012	-	-	85.59	-0.5%	-	-	-	-	-	964	242,928
May 2012	-	-	87.00	-0.7%	-	-	-	-	-	959	264,684
June 2012	-	-	87.22	-0.5%	-	-	-	-	-	964	242,928
II Quarter 2012	-	-	86.62	-0.6%	-	-	-	-	-	1,254	978,120
III Quarter 2012	-	-	91.93	-0.8%	-	-	-	-	-	1,029	802,620
IV Quarter 2012	-	-	98.41	-0.7%	-	-	-	-	-	959	759,528
I Quarter 2013	-	-	99.47	0.0%	-	-	-	-	-	-	-
Year 2013	-	-	88.96	-0.9%	-	-	-	-	-	-	-
Total											3,290,808
TOTAL					30	280	75	355			35,037,708

*Referred to the last session of the week

Weekly trend



Historical

